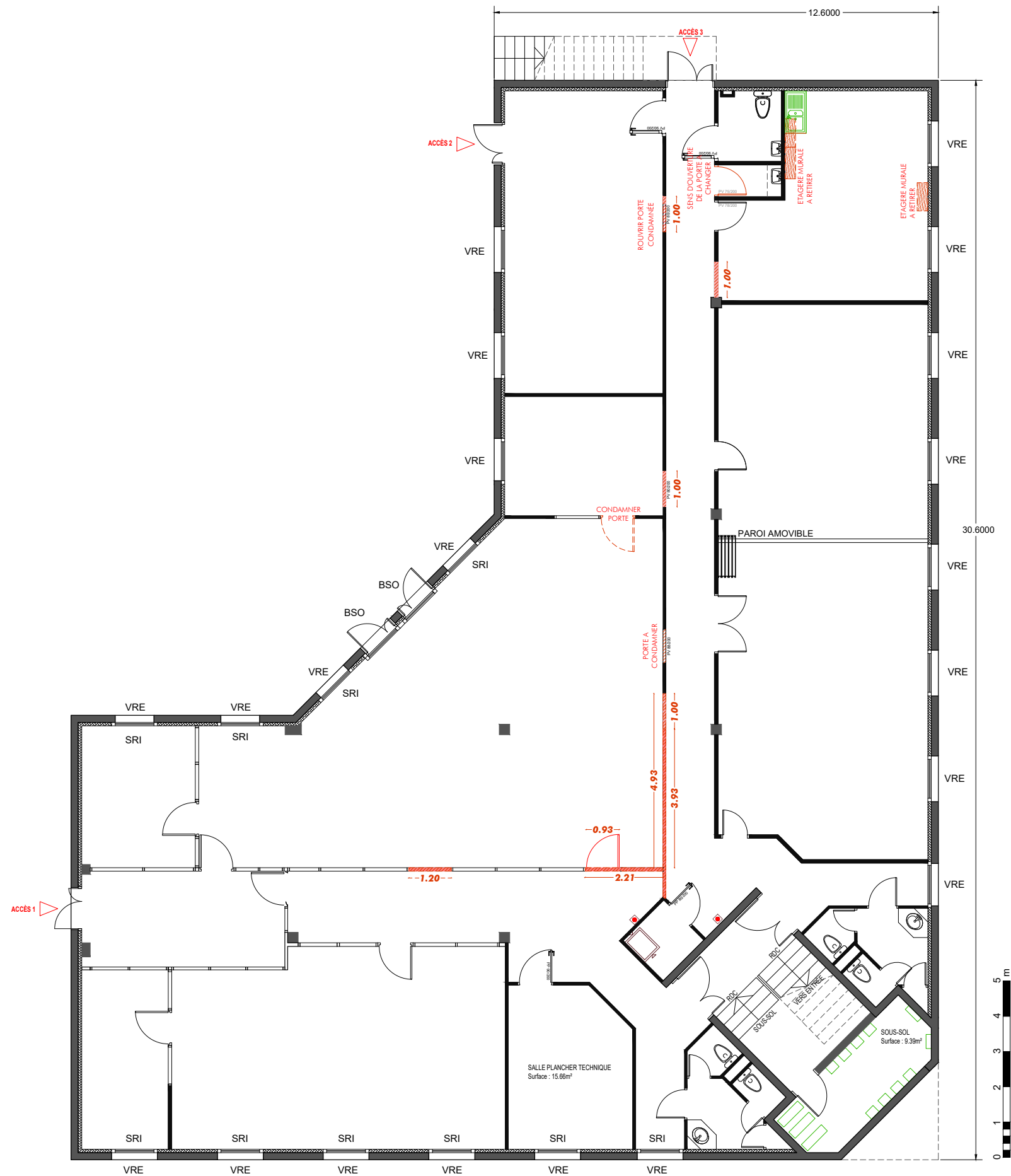
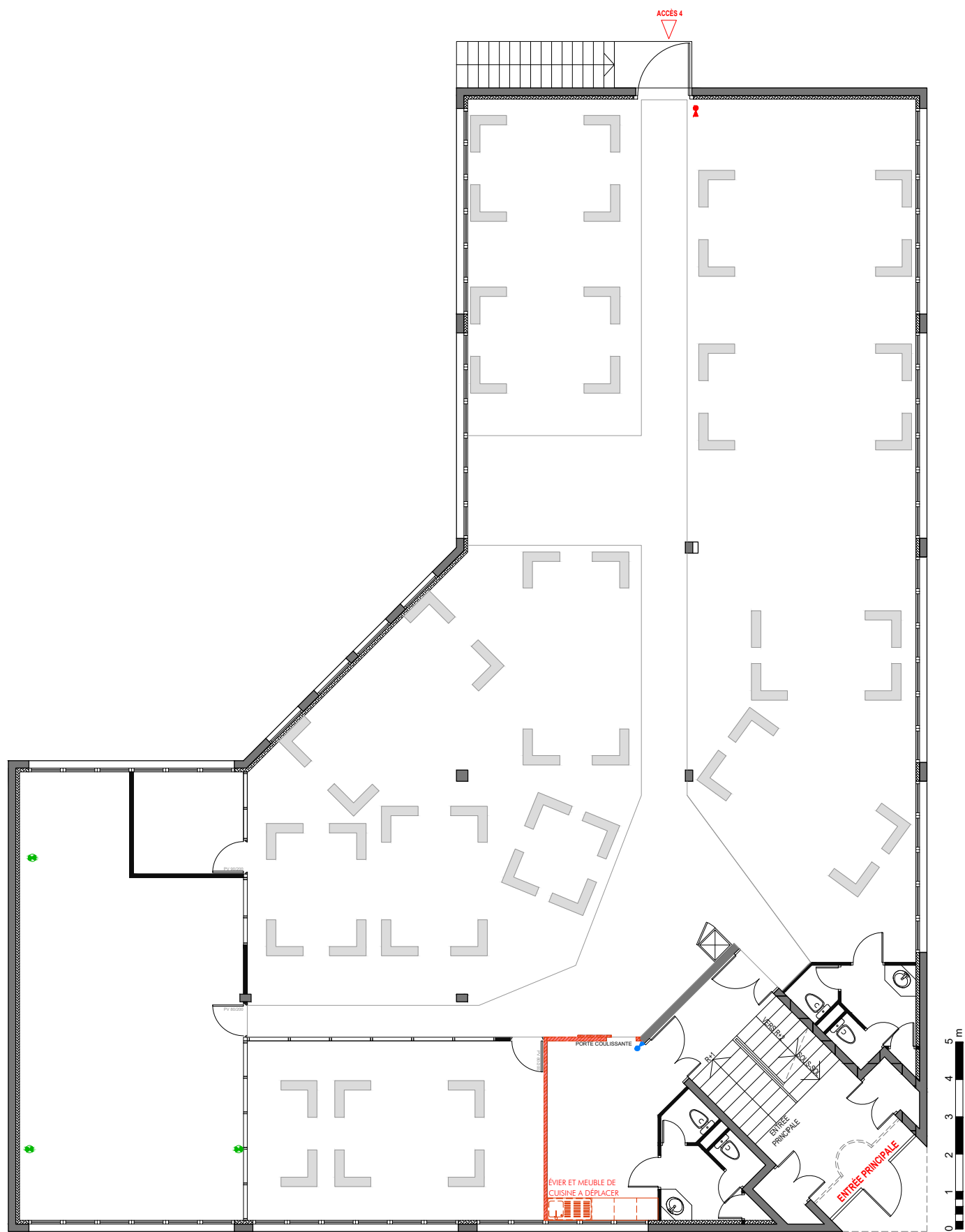
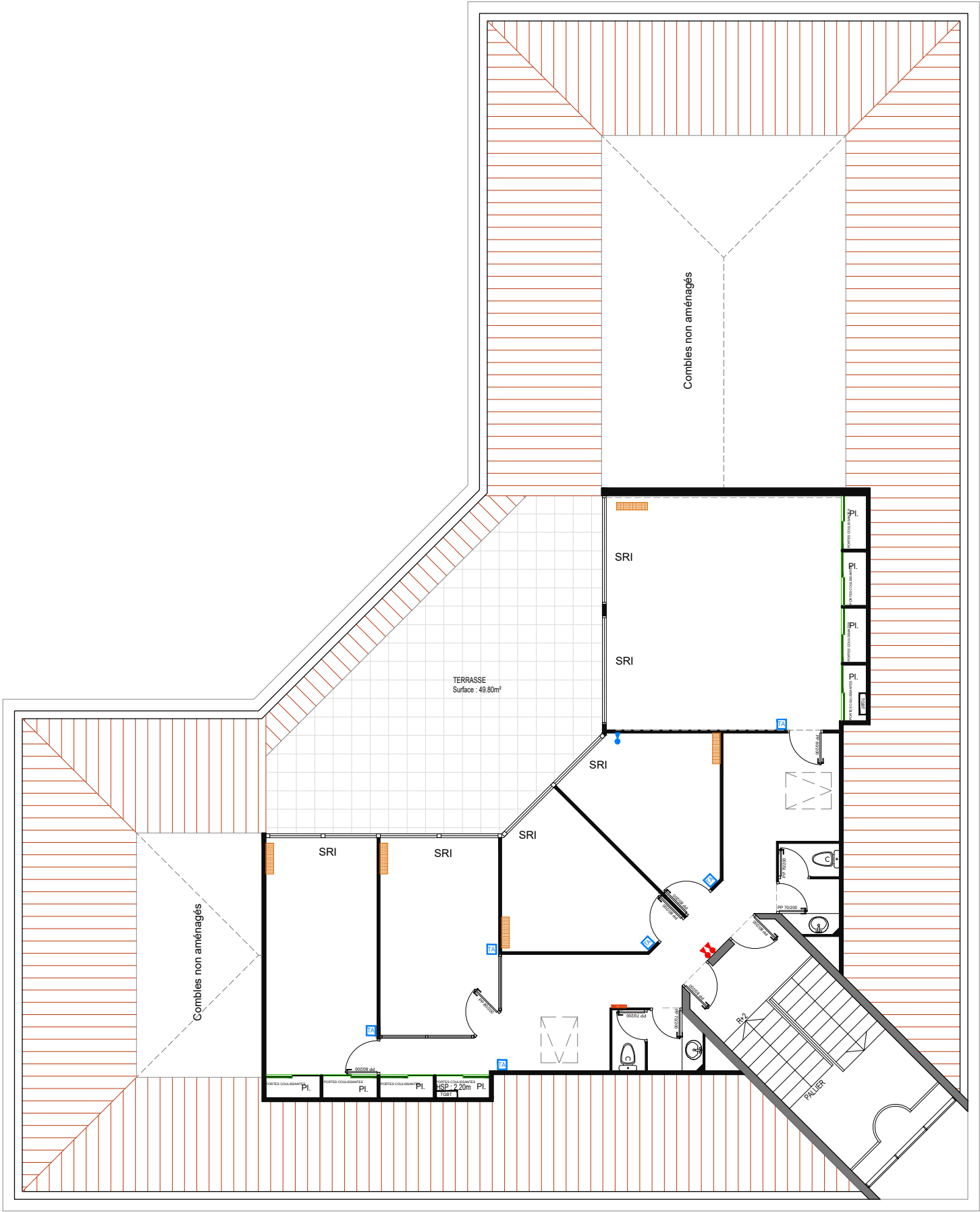


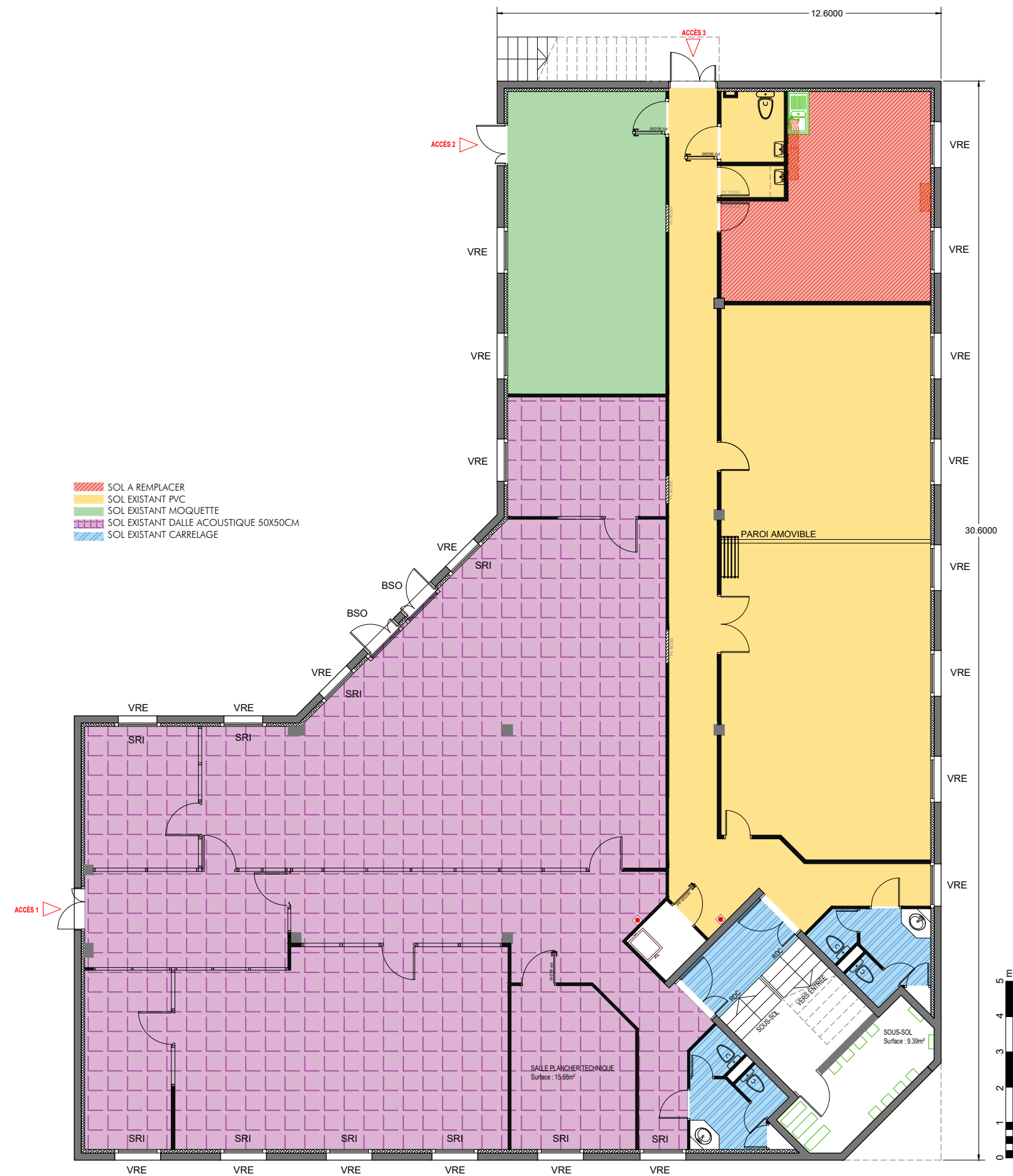


AMENAGEMENT du DIR SG DANS LE BATIMENT RUE RENE CHAR
11B Rue René Char
21000 DIJON

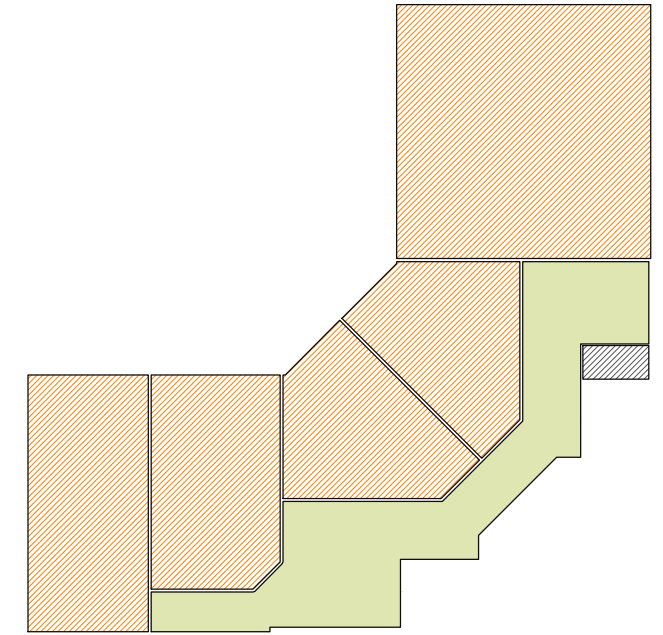
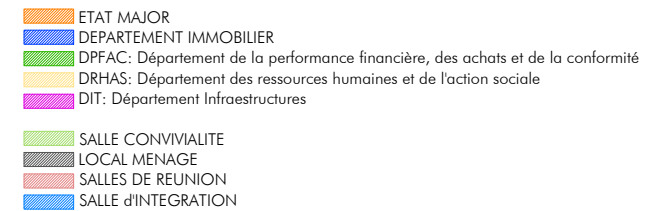


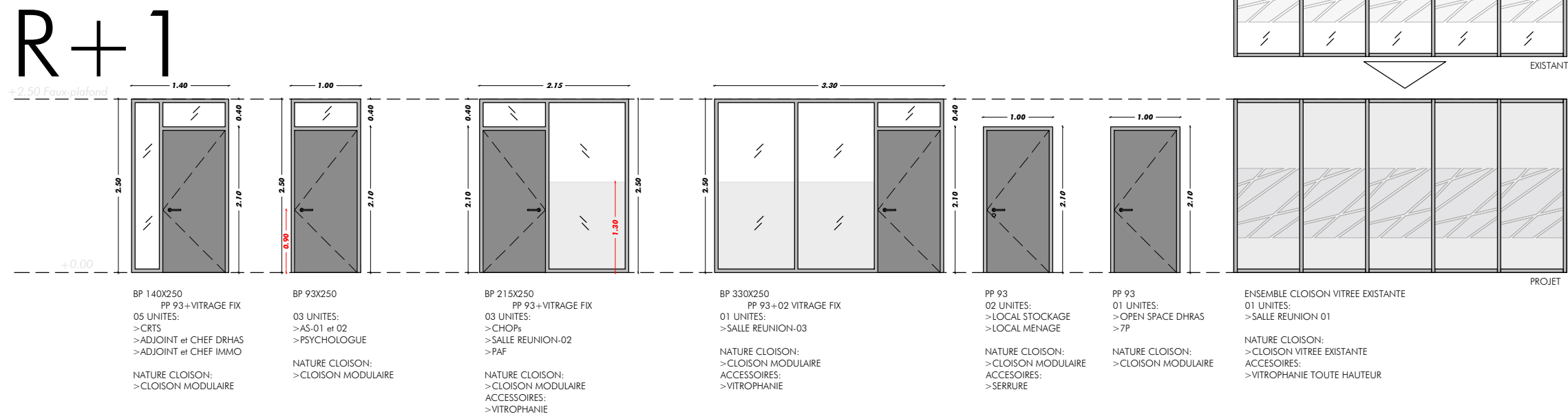
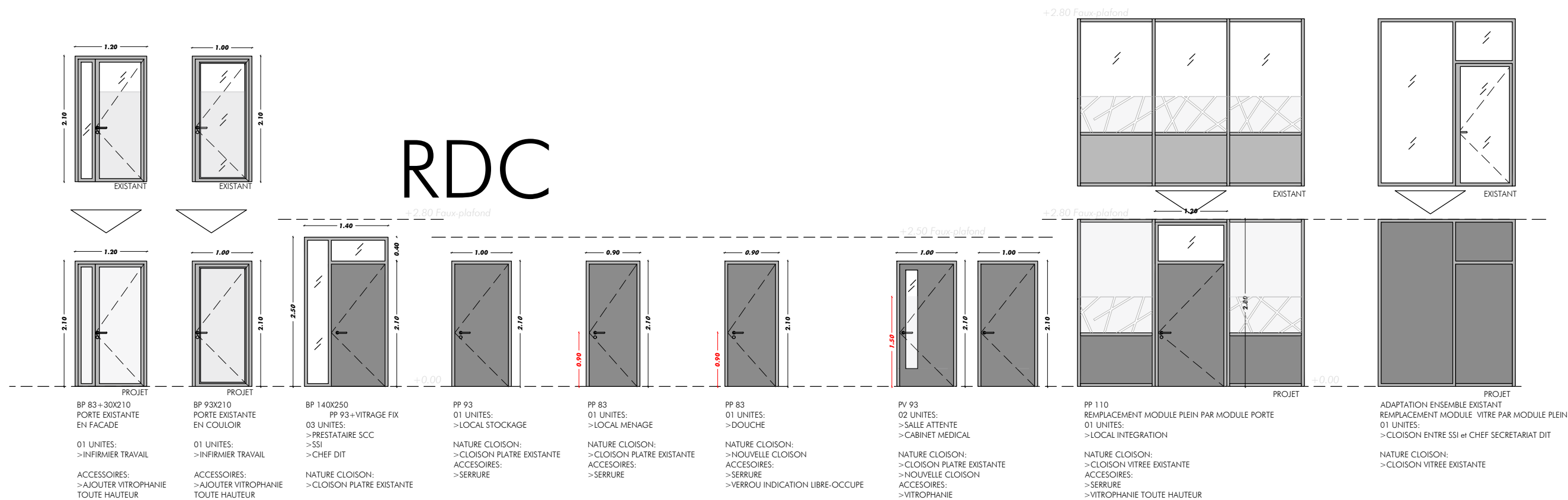


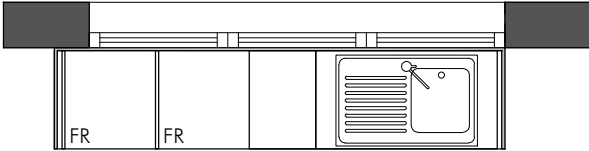
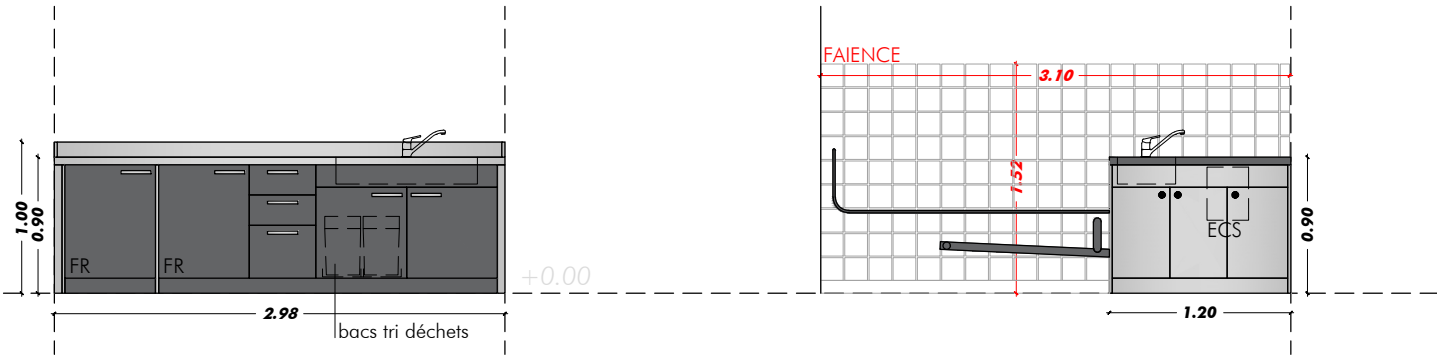






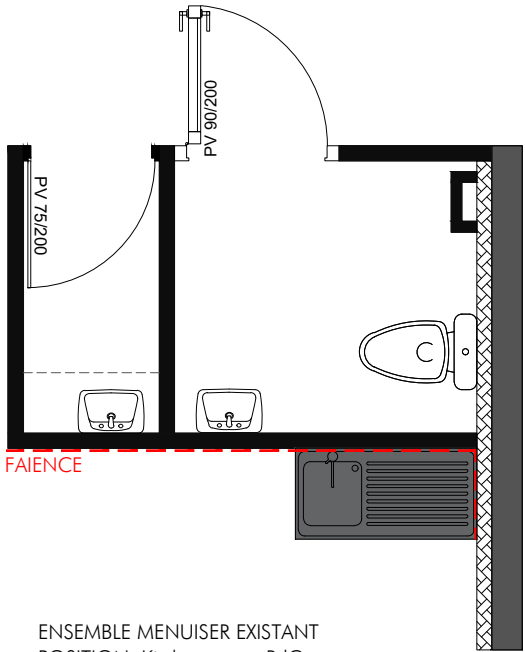






ENSEMBLE MENUISER EXISTANT
POSITION: Salle détente en R+1

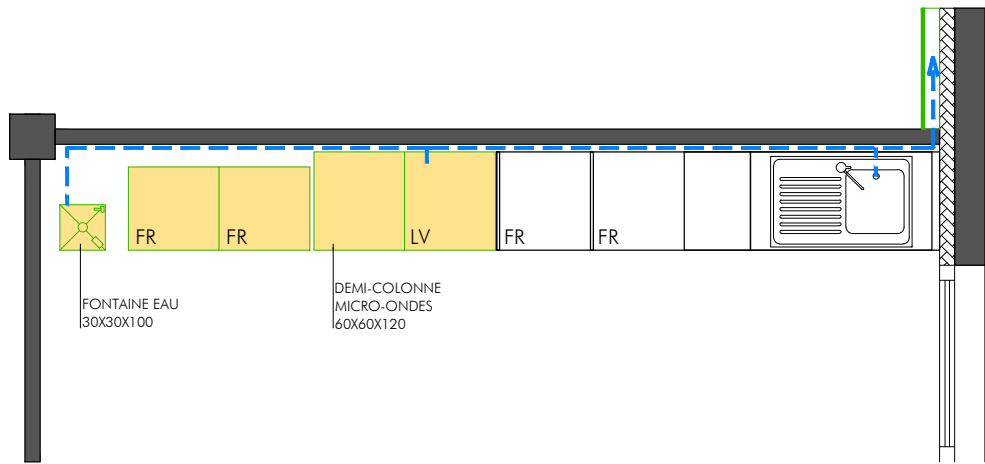
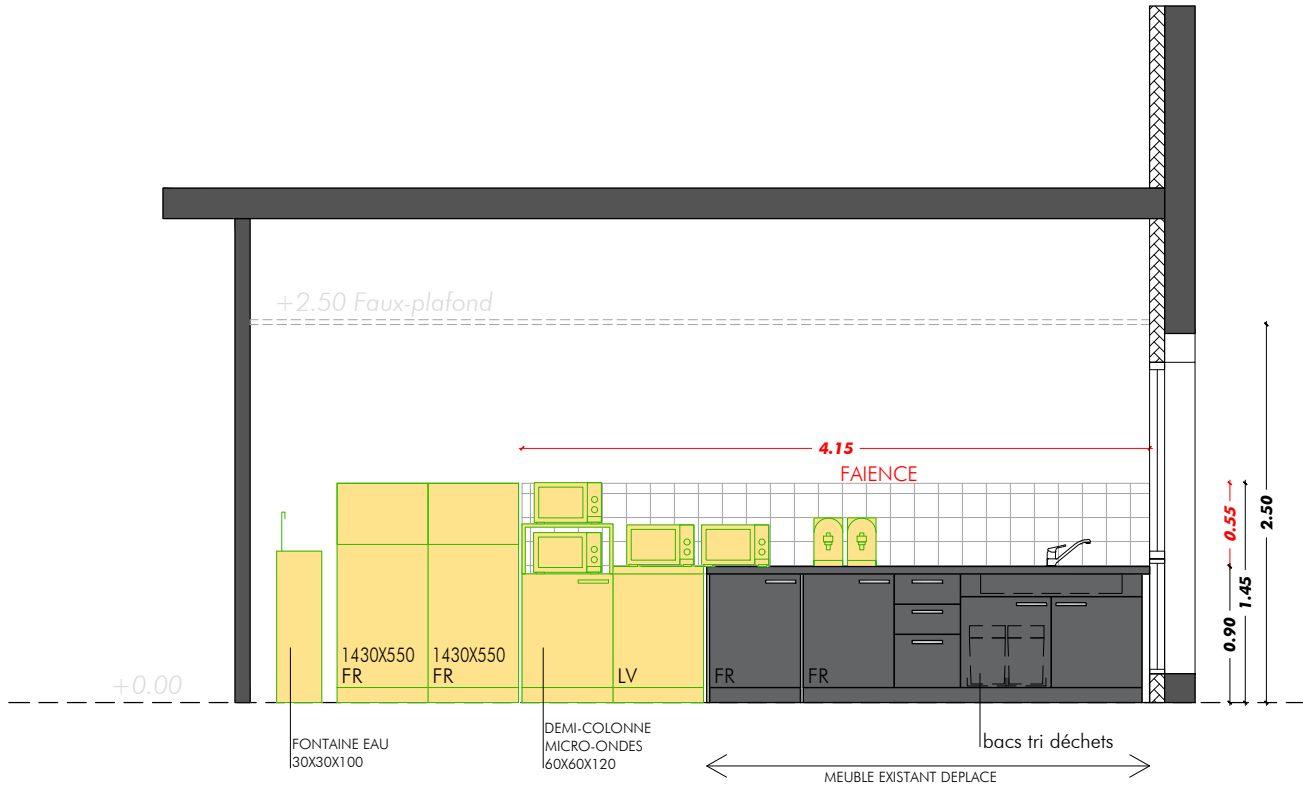
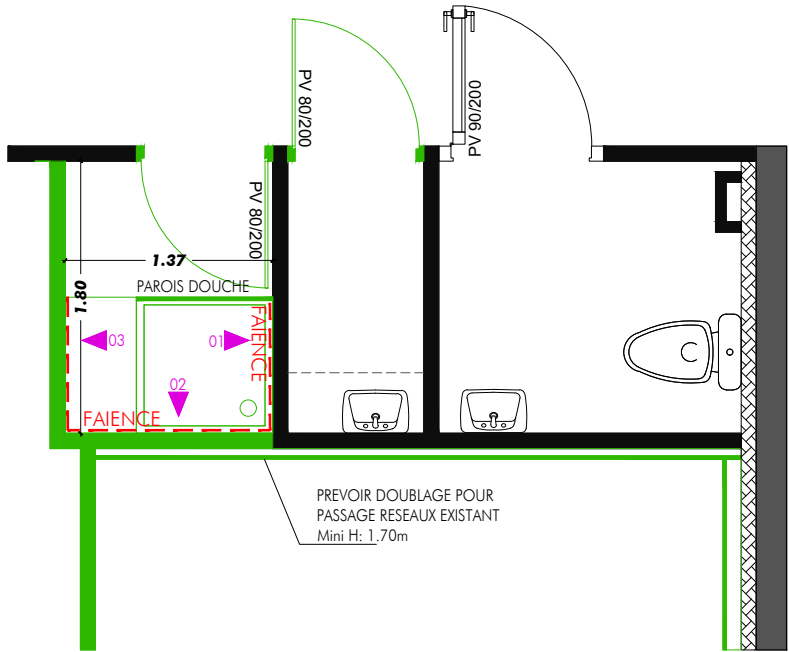
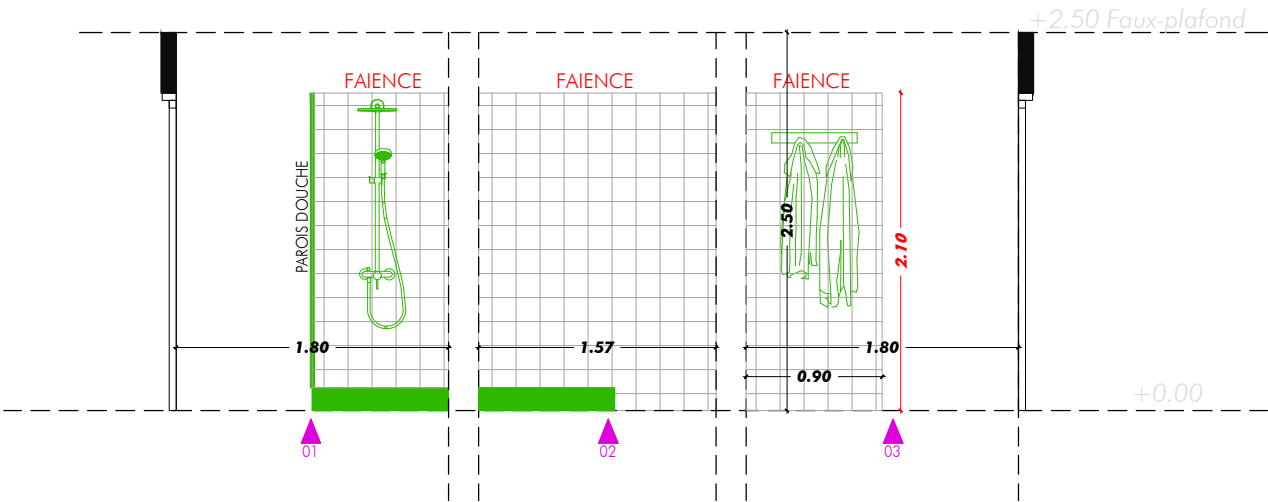
- EQUIPEMENTS:
02 FR
01 EVIER INOX + EGOUTTOIR
02 BACS TRI DECHETS

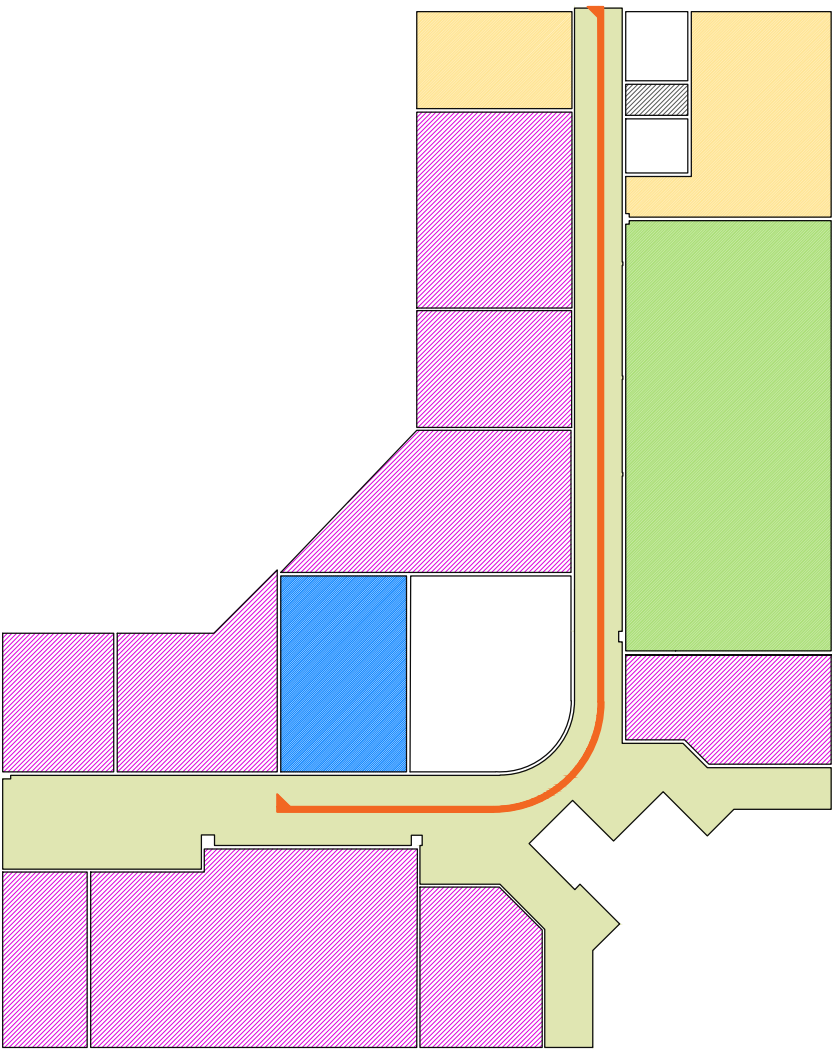


ENSEMBLE MENUISER EXISTANT
POSITION: Kitchenette en RdC

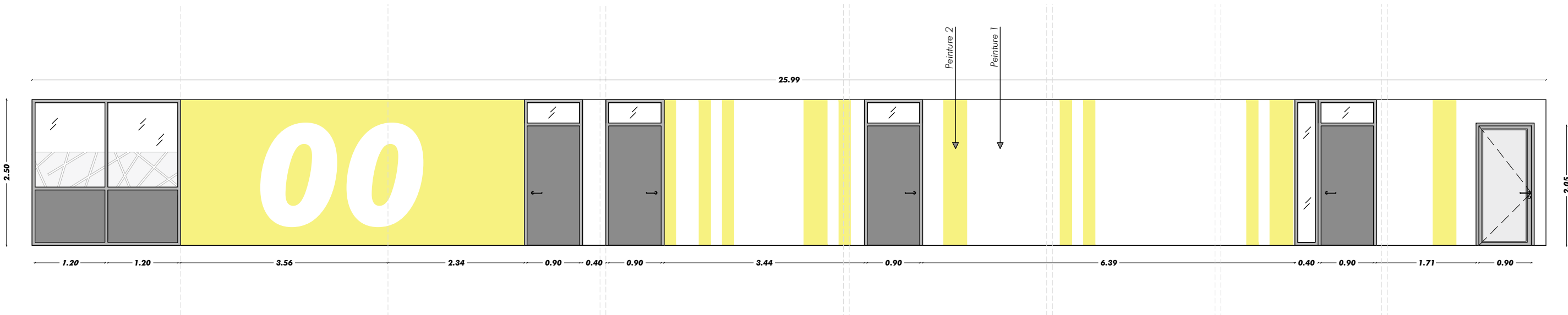
- EQUIPEMENTS:
01 EVIER INOX + EGOUTTOIR
01 BALLON ECS

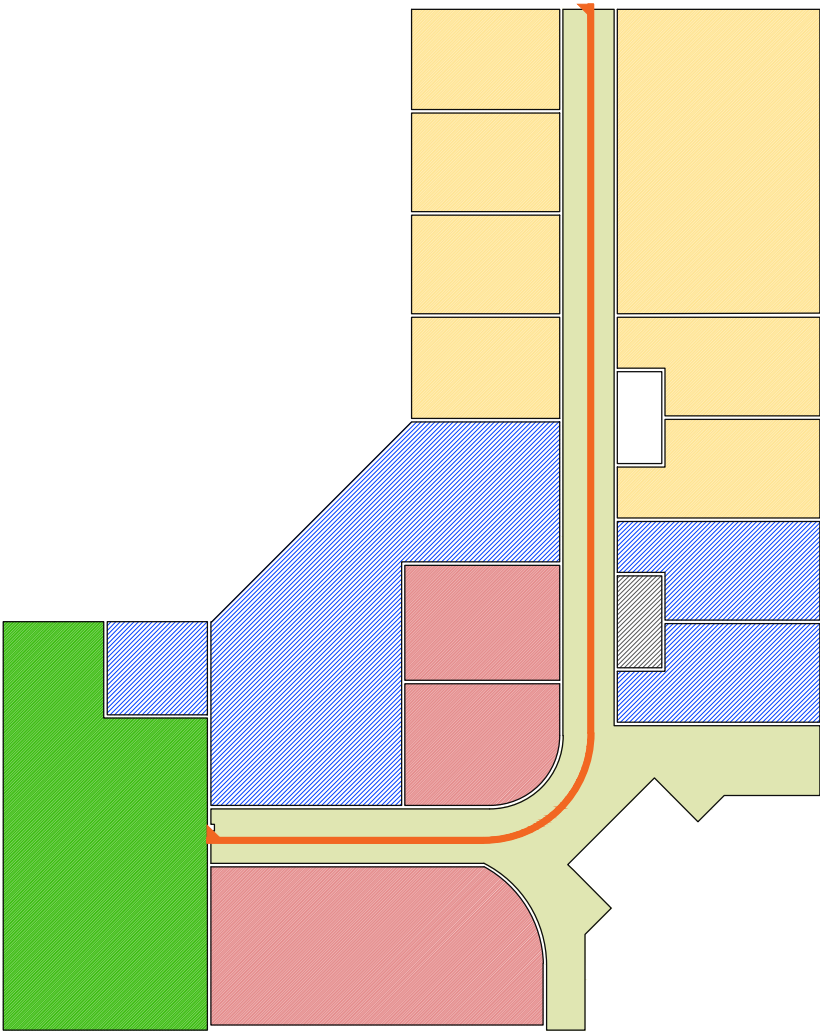






— Détail des menuiseries





Détail des menuiseries

